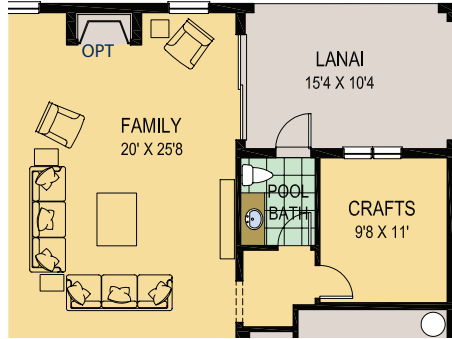


PARKER Floorplan | 5-6 Bedroom, 3.5 Bath

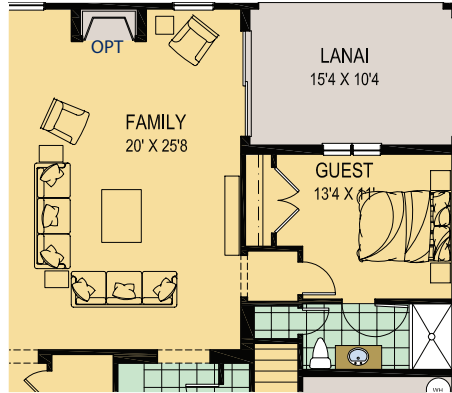
Square Footage

First Floor: 2,178 Sq. Ft. Lanai: 176 Sq. Ft.
 Second Floor: 2,553 Sq. Ft. Garage: 721 Sq. Ft.
 Total Living Area: 4,731 Sq. Ft. **TOTAL: 5,628 Sq. Ft.**

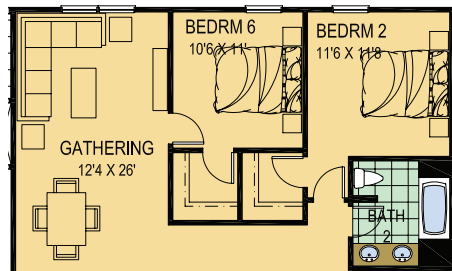
Pool Bath/Craft Room Option



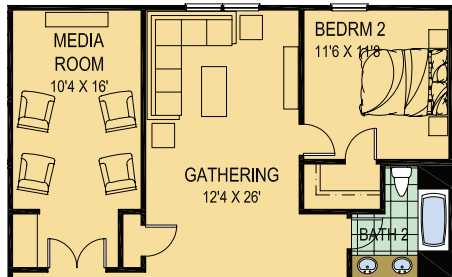
Guest Room Option



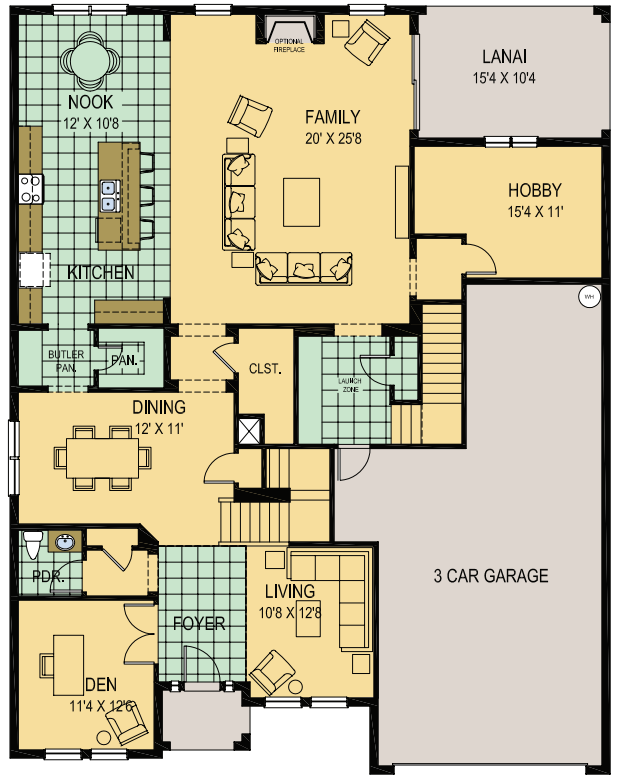
6th Bedroom Option



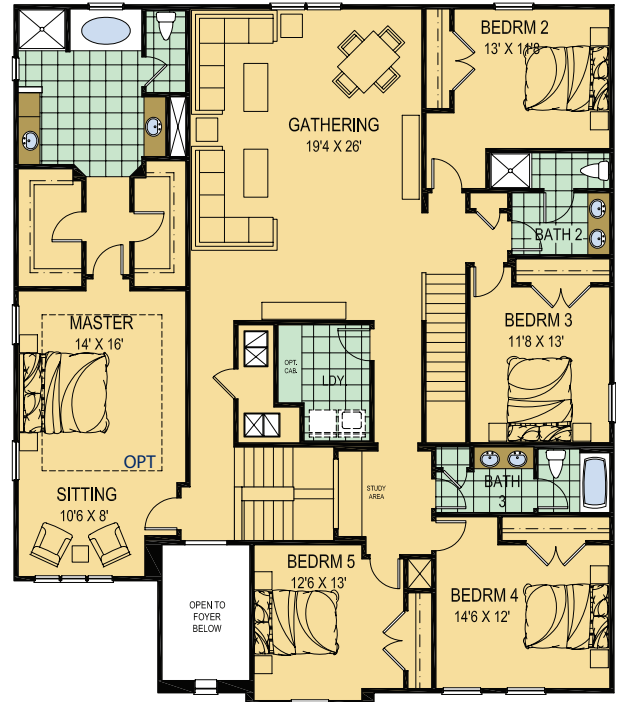
Media Room Option



Downstairs



Upstairs



Builder #CGC1507971

All dimensions are approximate. Because we are always improving our homes, we reserve the right to substitute building materials, appliances and fixtures, like kind and quality, and to change features, options and architectural details without prior notice. Some models may be reversed from floor plan. Refrigerator, washer and dryer are shown for placement purposes only and are not included in sales price. Windows, ceiling and front porches may differ by elevation.

ROYAL OAK HOMES

PARKER